

Simple Robe Tutorial

By Marianne Jeffrey

adventurousquilter.blogspot.com



Fabric Requirements

This robe is fully lined for additional warmth and comfort.

Option 1 Spring/Fall Weight Robe

Use fabric only for a light Spring/Fall robe

Lining Fabric: 3 yards (60+"width)

Outer fabric: 3 yards(60+"width)

Option 2 Quilted Winter Weight Robe (see pages 3 to 7)

Outer layer is quilted with quilt batting and fabric/quilt scraps for a super warm Winter robe.

Lining Fabric: 3 yards (60+"width)

Quilt batting: If buying from a 90" batting roll buy 90" x 48"

Outer fabric: a selection of scraps and quilt orphan blocks

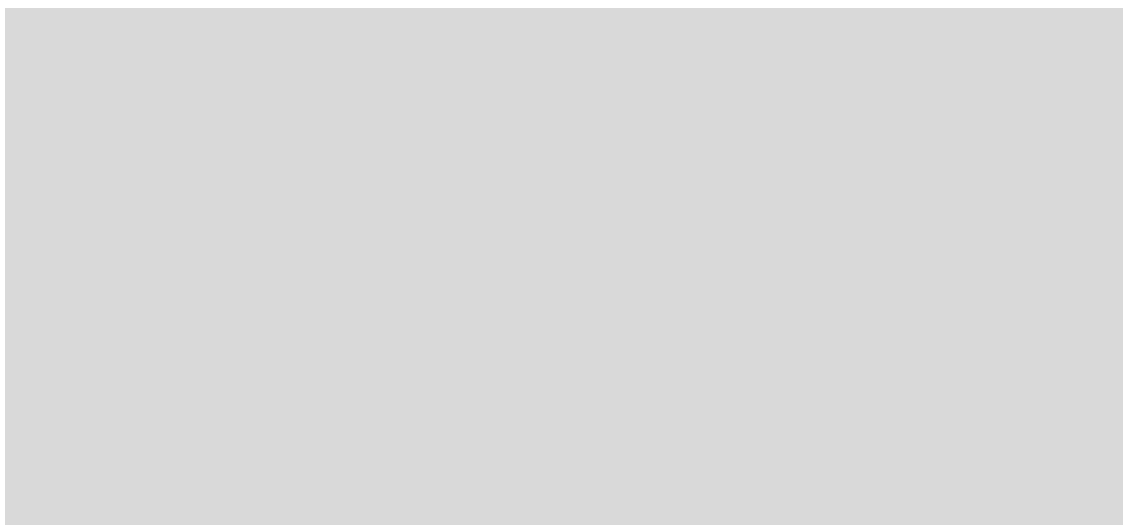
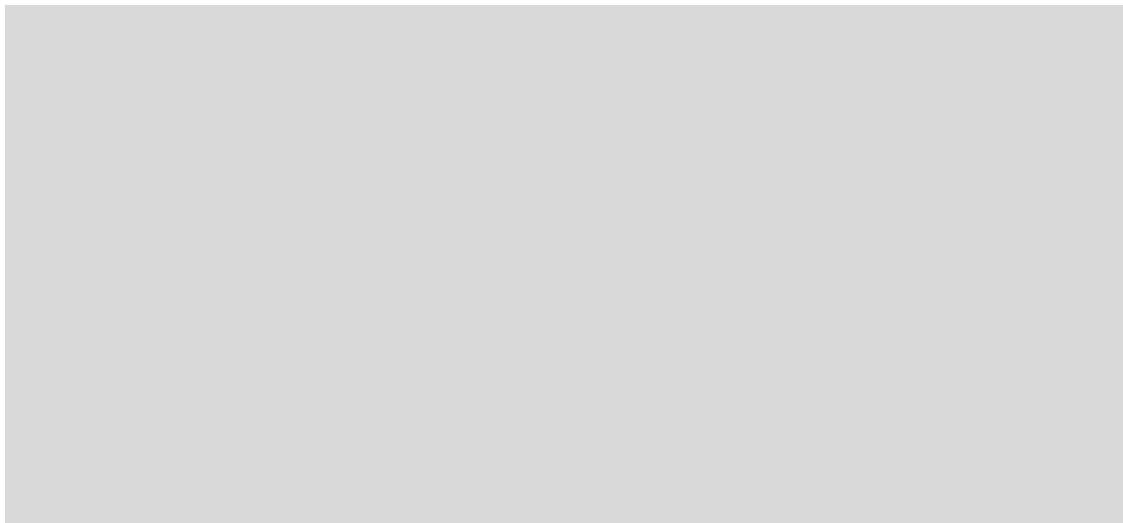


Pattern Drafting

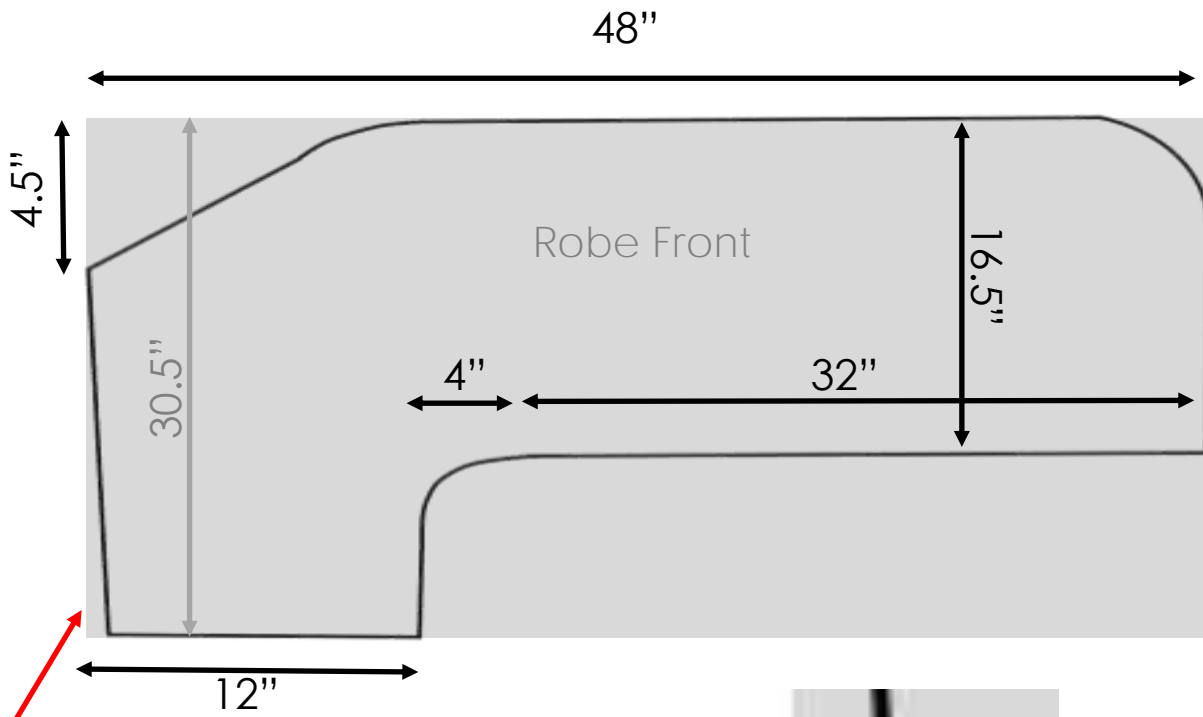
The first step is to draft your pattern.

I bought a large roll of brown paper in the painting section of Home Depot (hardware store), I keep it handy in my studio for drafting large patterns, it is very inexpensive (\$10 roll) and quite a thick sturdy paper that will last.

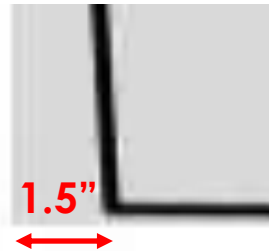
Start with 2 pieces of paper 48" long x 30.5" wide



Use the measurements over page to draft your robe pattern. This is a one size fits most pattern.

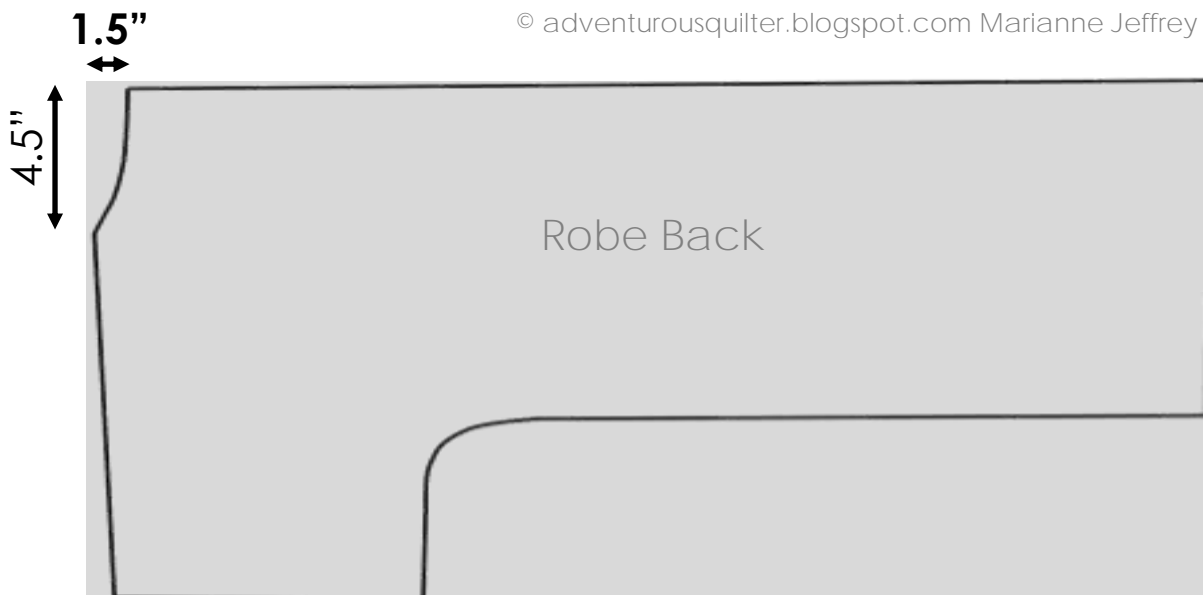


I have made the shoulder line a slope that drops 1.5"



The back pattern piece is almost the same as the front piece with 2 exceptions:

1. neckline
2. No curve at the hemline

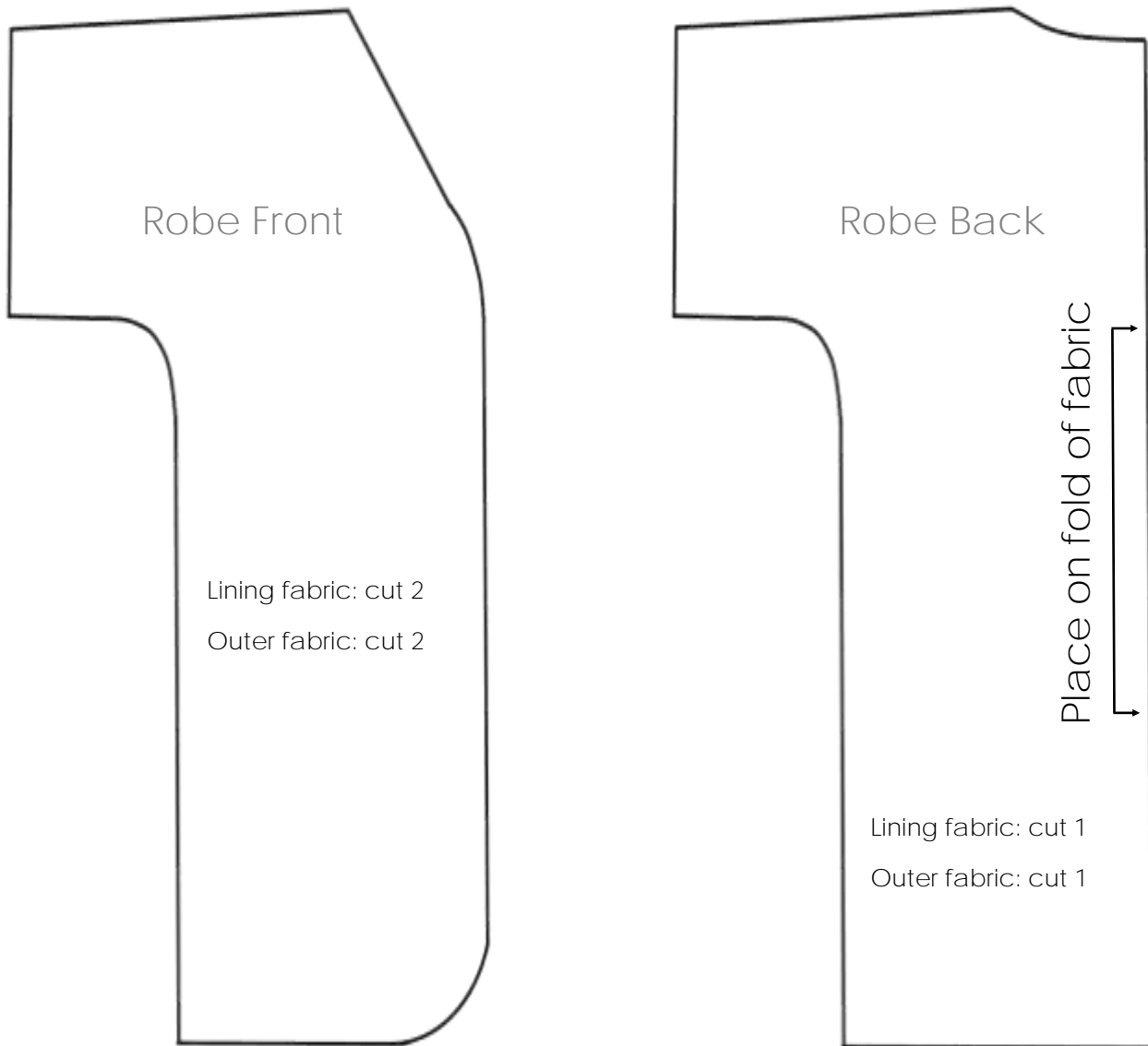


© adventurousquilter.blogspot.com Marianne Jeffrey

Pattern Drafting Finishing Touches

Once you have cut your pattern pieces from the paper you will need to make some important notes on the pattern pieces.

1. Label them front and back
2. Make a not on the back pattern piece that it must be cut on the fold of the fabric
3. Label them to ensure you cut the right number of pieces



Front

Lining fabric: cut 2

Outer fabric: cut 2

Batting: cut 2

NOTE: if you are doing a patchwork quilted version you will need to remember to add the batting to the cutting instructions

Back

Lining fabric: cut 1

Outer patchwork fabric: cut 1

Batting: cut 1

Quilted Robe Ideas

To make a quilted robe you can either use a quilt as you go method (See page 7 for more detail) to add strips of pieced fabric or quilt the fabric onto the robe batting all at once after you have pieced it.

IMPORTANT NOTE: do not quilt it to the lining fabric **ONLY** the quilt batting and outer fabric are quilted together!

Modern improv piecing techniques make a quilted version of this robe a very modern yet functional robe. Check out my Mod Scrap Adventures book to learn about improv piecing and modern improv quilt design.

Available on Amazon \$14.75

© adventurousquilter.blogspot.com Marianne Jeffrey



Just imagine improv piecing your robe outer fabric with lots of pastel crumb scraps like these shown in blue. And use a medium tone solid background fabric from the same color palette to give the design a striking modern scrappy look!

Or try these color combos:

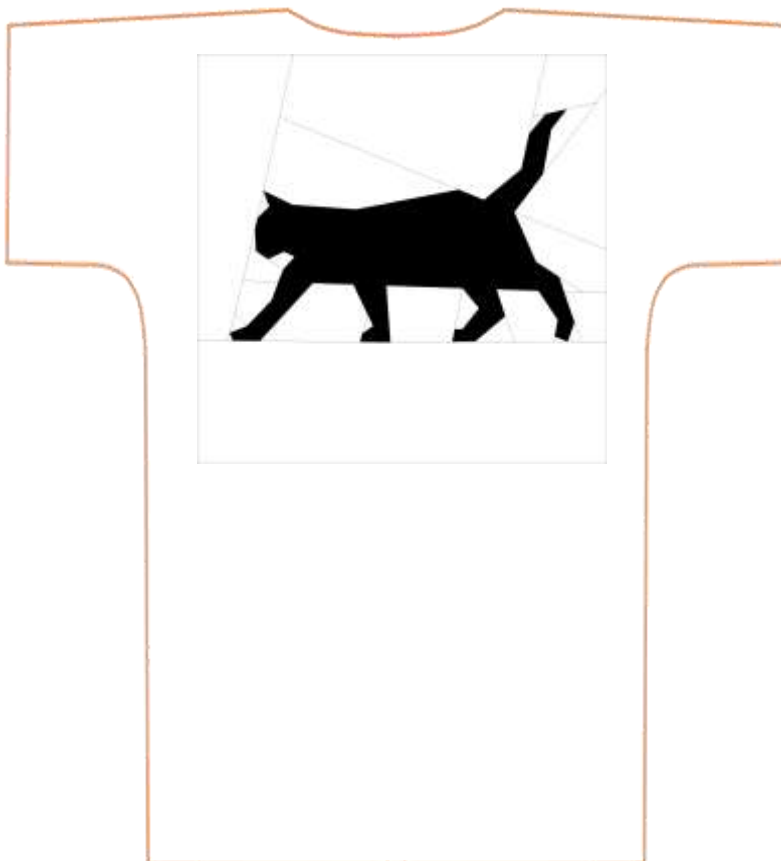


Quilted Robe Ideas

Imagine using a set of themed quilt blocks (like these science themed ones from my Scientific Adventures patten) to make robes as gifts for your loved ones!



© adventurousquilter.blogspot.com Marianne Jeffrey



Use a fun FPP quilt block as a feature on the robe back to add a fun theme to your robe!



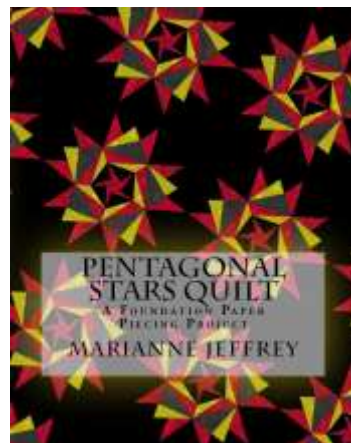
Quilted Robe Ideas

Seasonal Robes! These are blocks are from my great Halloween Adventures pattern book available on Amazon \$19.99

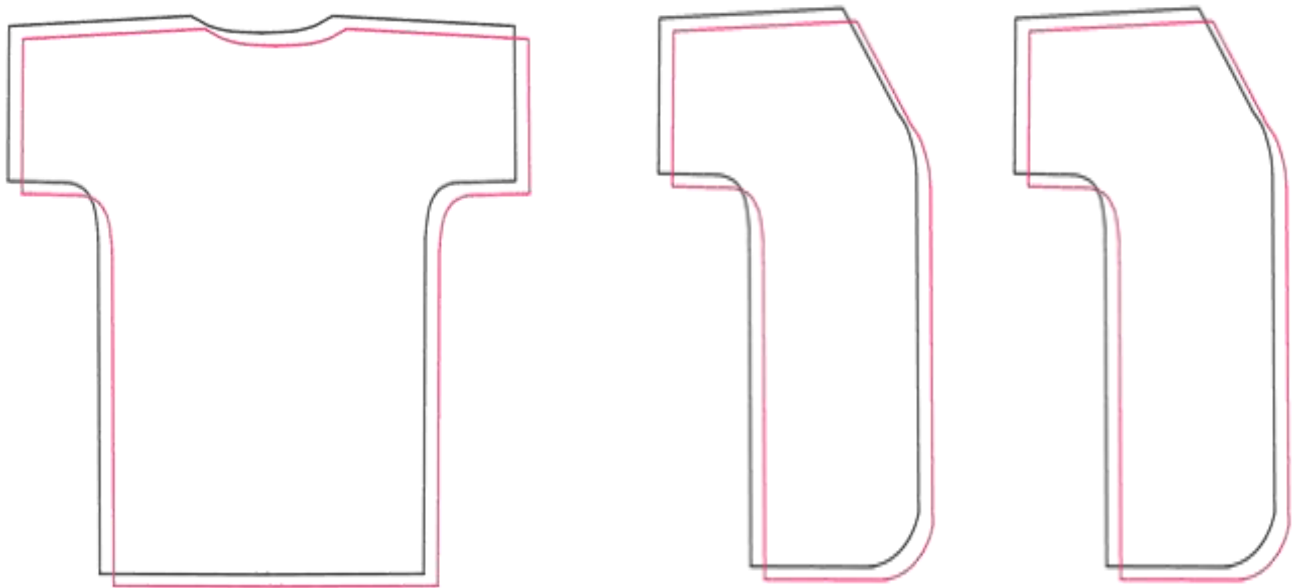


Imagine a fun star like my pentagonal stars quilt blocks as a fun feature on the robe back!

Amazon \$16.09



NOTE: Robe construction steps only show the basic robe construction, if you are doing a quilted robe the construction process is the same but first you will need to quilt your outer fabric to the batting for each pattern piece.



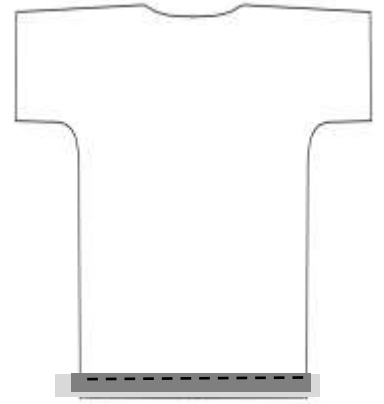
Robe back: quilt outer fabric to the batting

Robe front: quilt each piece of front outer fabric to the front batting

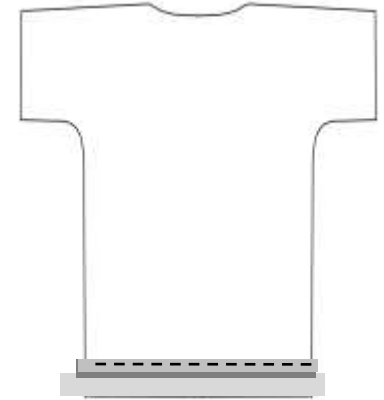
You could do free motion quilting, straight line quilting or even quilt as you go!

Quilt As You Go Basics

Place 2 strips right sides together at the base of the robe batting. Stitch them on to the robe batting 1/4" from upper edge of fabric.



Press open

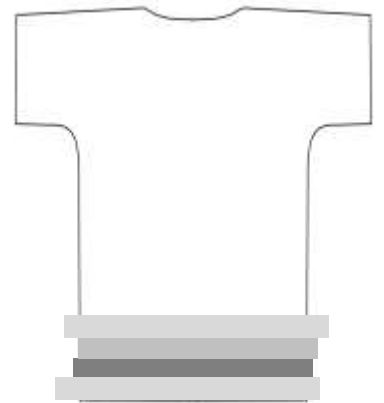


Add another strip and press open.

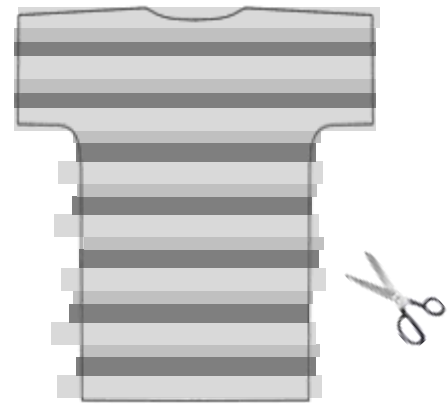
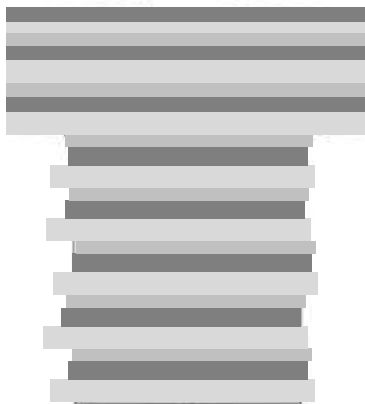
Repeat

Repeat

repeat



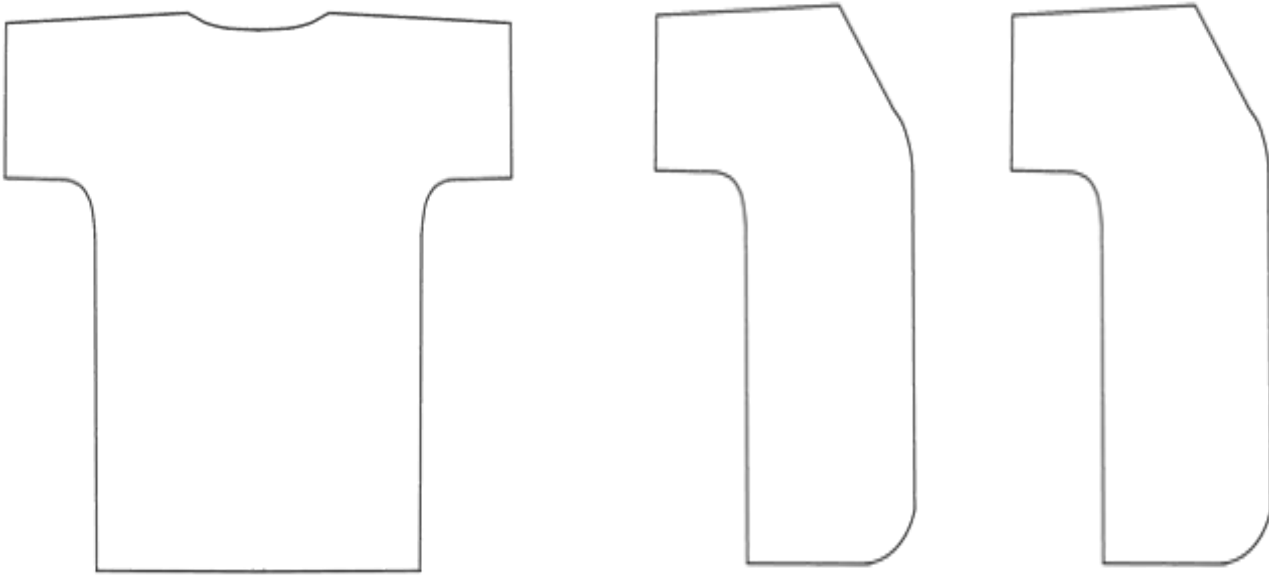
Repeat until the entire robe batting piece is cover in fabric. Then turn over and trim away any excess fabric from the edges.



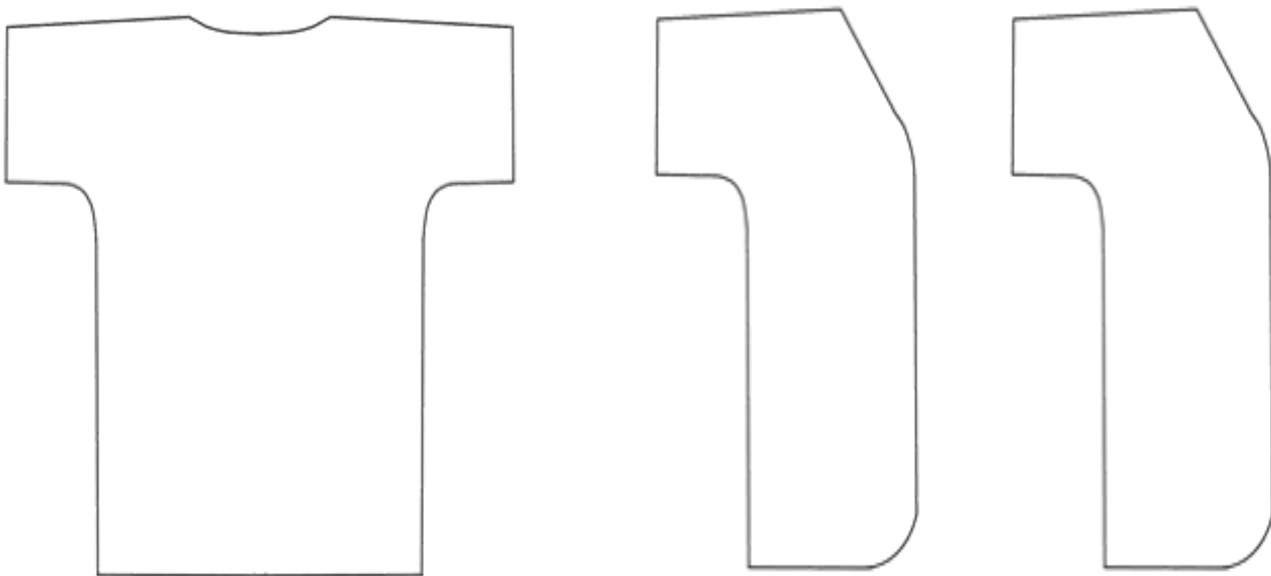
Fabric Cutting

Step 1 — ensure you cut the right pieces from the right fabrics

Lining fabric: You need one backing piece and 2 fronts



Outer fabric: You need one backing piece and 2 fronts

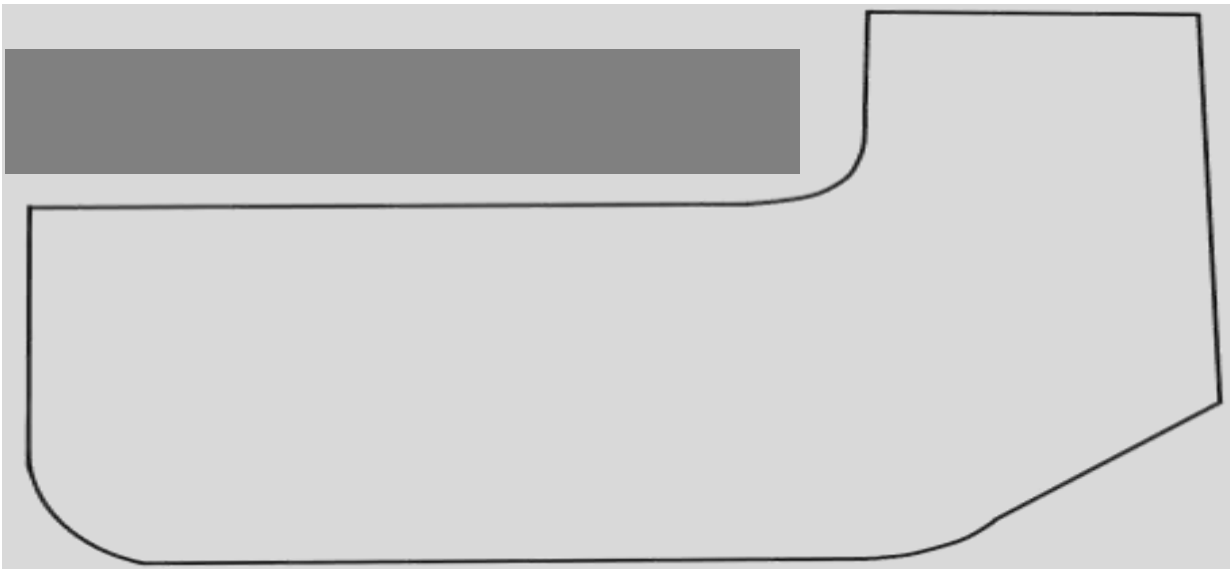


Quilted robe extras: batting for the backing x 1 and front x 2

Belt Fabric Cutting

When you have cut the pieces don't discard the pieces of fabric from under the arm of the robe. That scrap fabric can be used in the belt construction.

Belt fabric is 5" wide. Sew multiple 5" wide strips cut from scrap underarm fabric together to get a piece 70" long.



70" X 5"



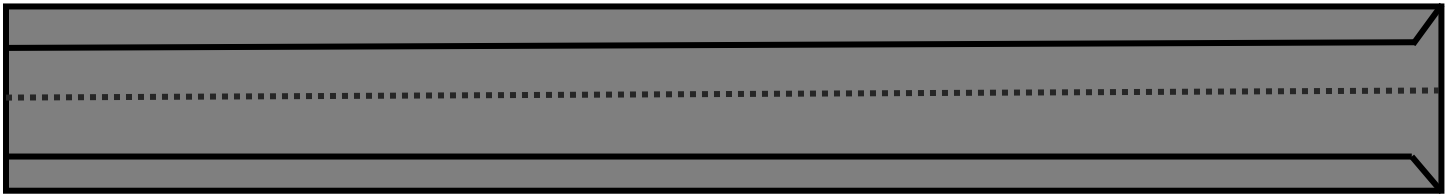
Belt Construction



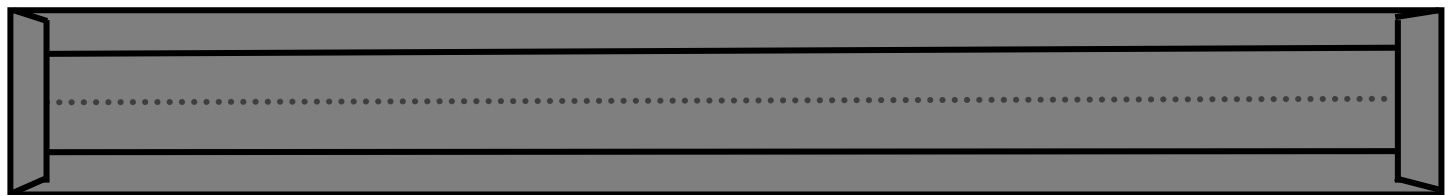
I always use scraps of fabric for this and join them together to get a 5" x 70" strip.

Fold in half lengthwise and press then re-open

Fold 1/2 inch of the lengthwise edges in towards the centre fold



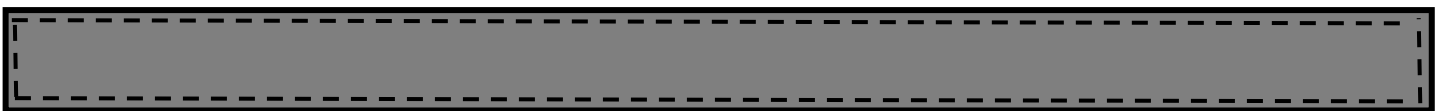
Fold up to 1/2 inch of both ends over, press, if the end is a selvedge that looks neat and tidy you can skip this step:



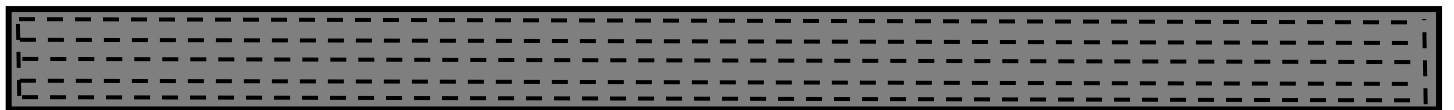
Fold in half lengthwise, pin as needed. Raw edges will be enveloped inside the strap



Stitch close to the folded edges all the way around to close the strap.



Optional: Stitch a series of rows along the length of the strap 1/4"



This step simply reinforces the strap and keeps the layers together

Your belt is complete!

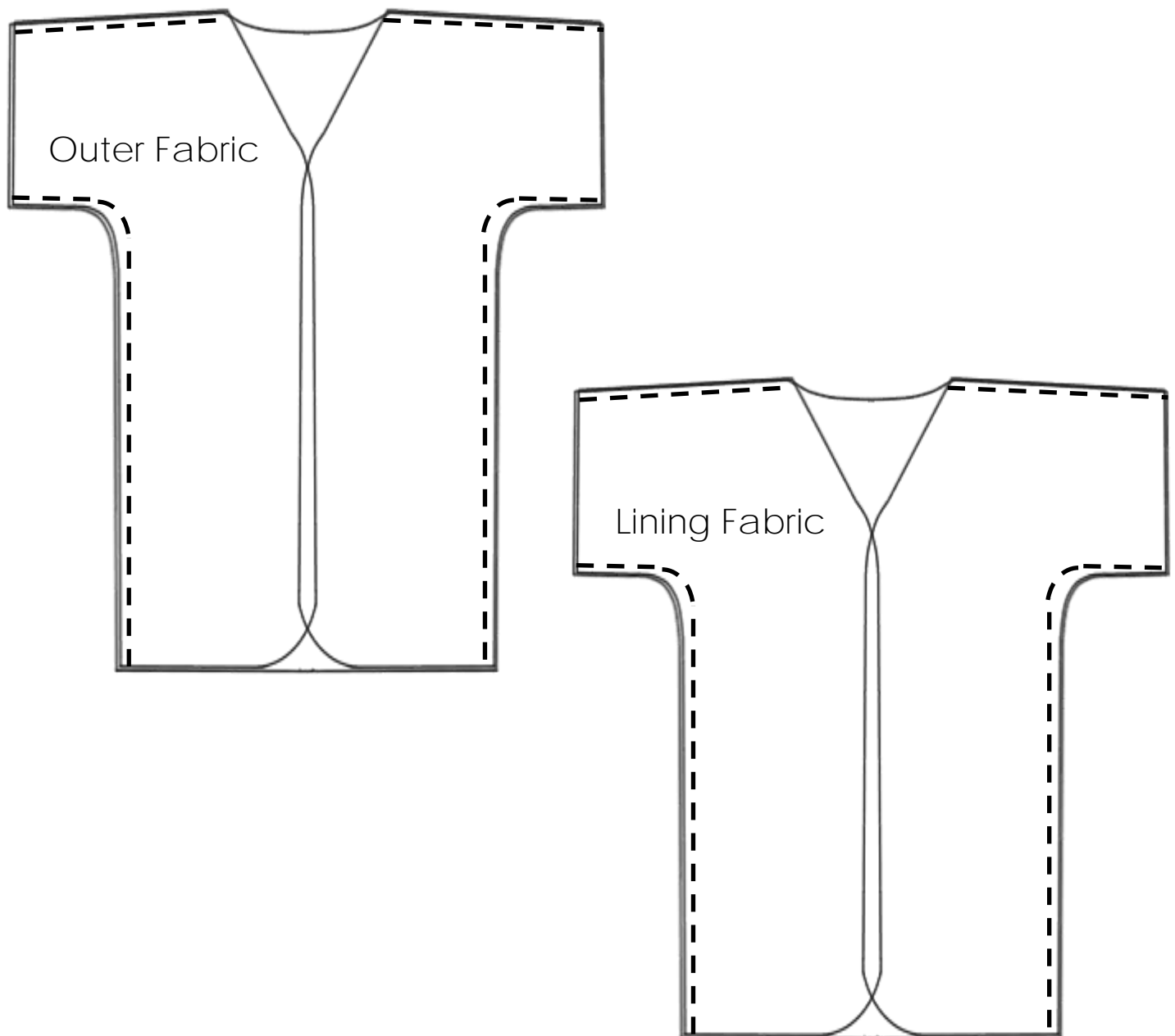
© adventurousquilter.blogspot.com Marianne Jeffrey



Robe Construction

Step 1

Right sides together, stitch the side and shoulder seams for the robe outer and lining.



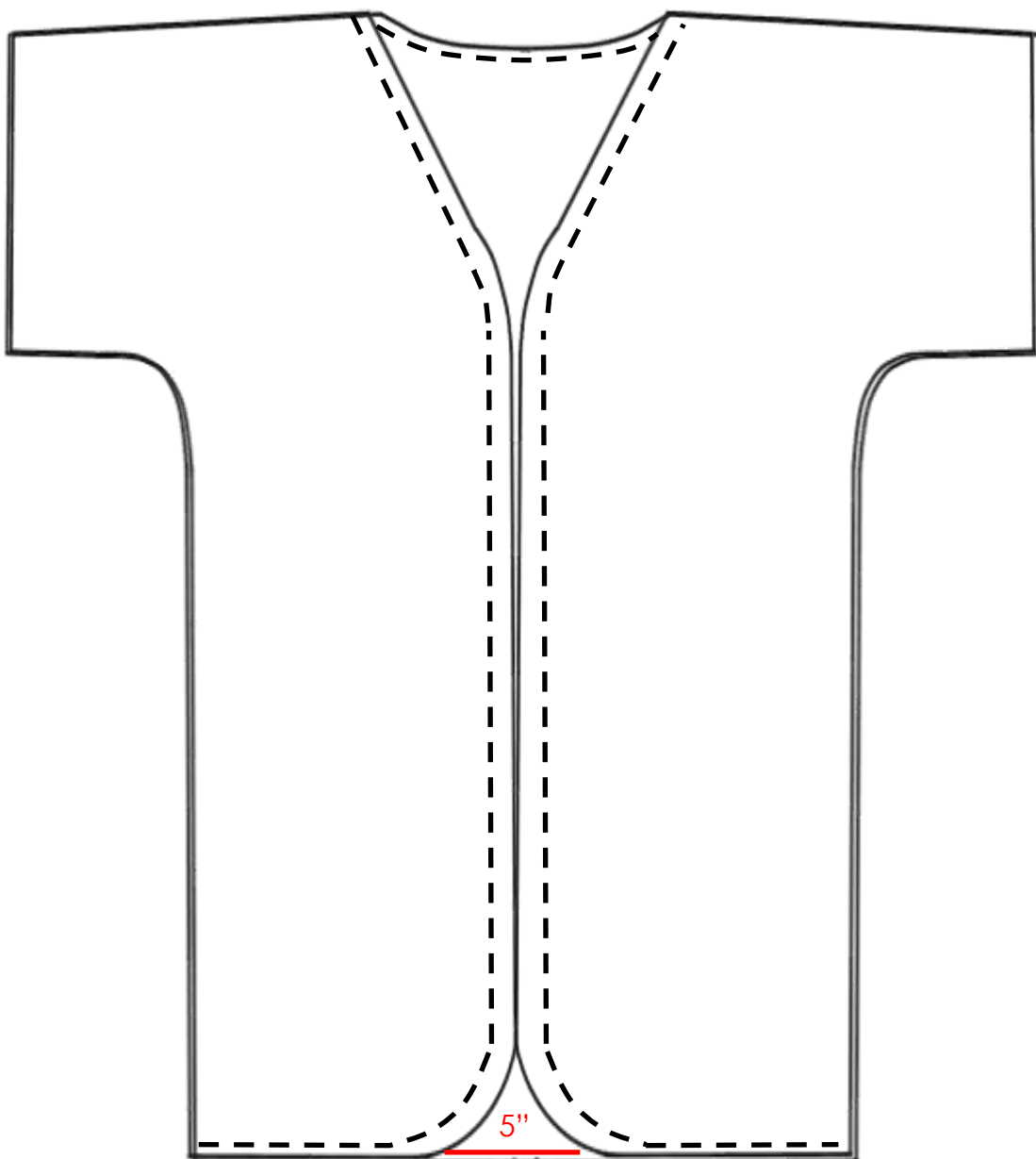
So it seems like you have 2 robes once you have done this — one is the lining.

Step 2

Turn the outer piece of the robe right side out.

Now place the two right sides together. The lining fabric will be over the outer fabric. Remember to check that you have right sides together!!!

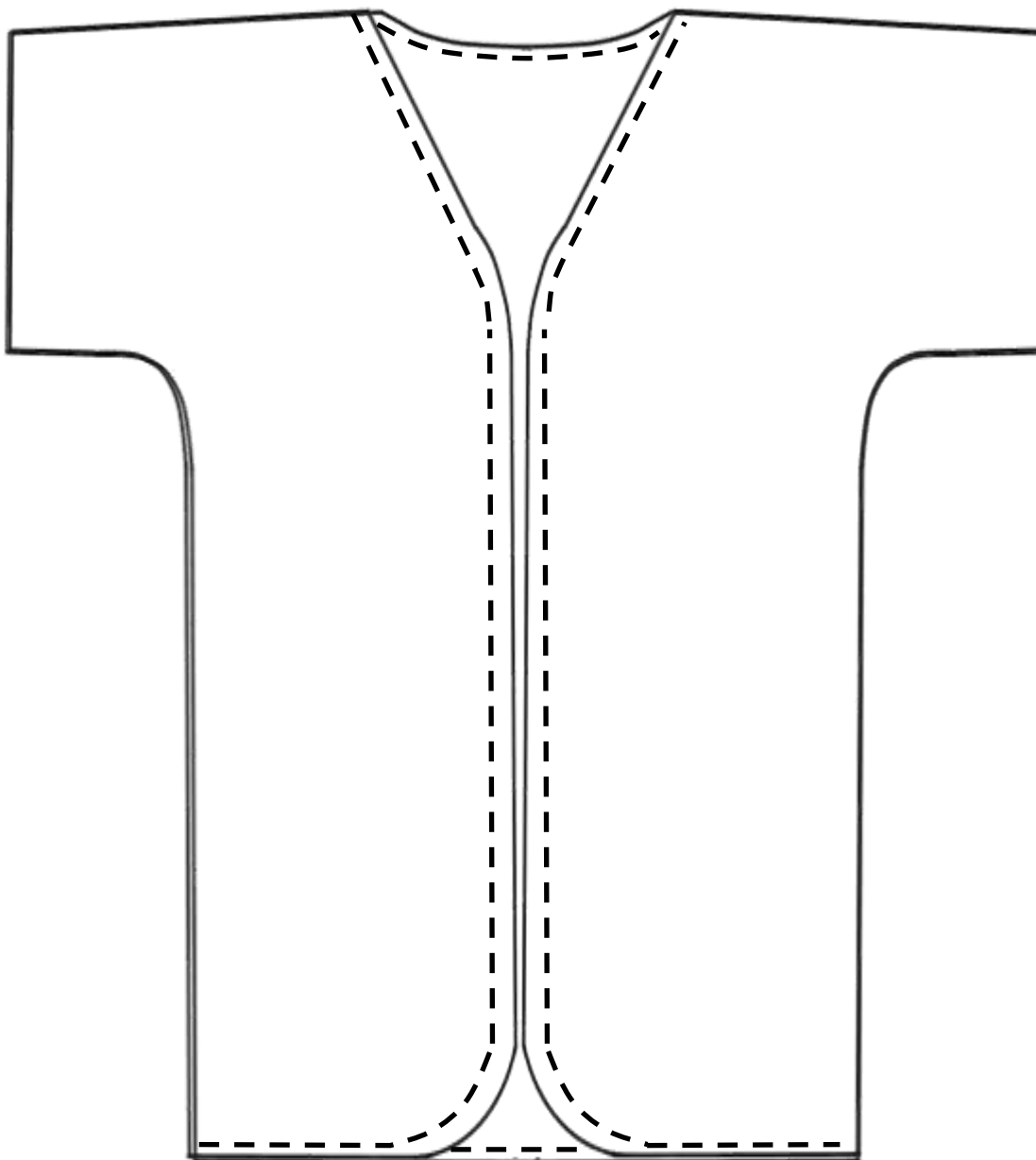
Now sew a seam that joins the two pieces together around the neck line, front opening and hemline BUT be sure to leave a **5" gap** at the rear hemline so you can turn the robe right side out once.



Step 3

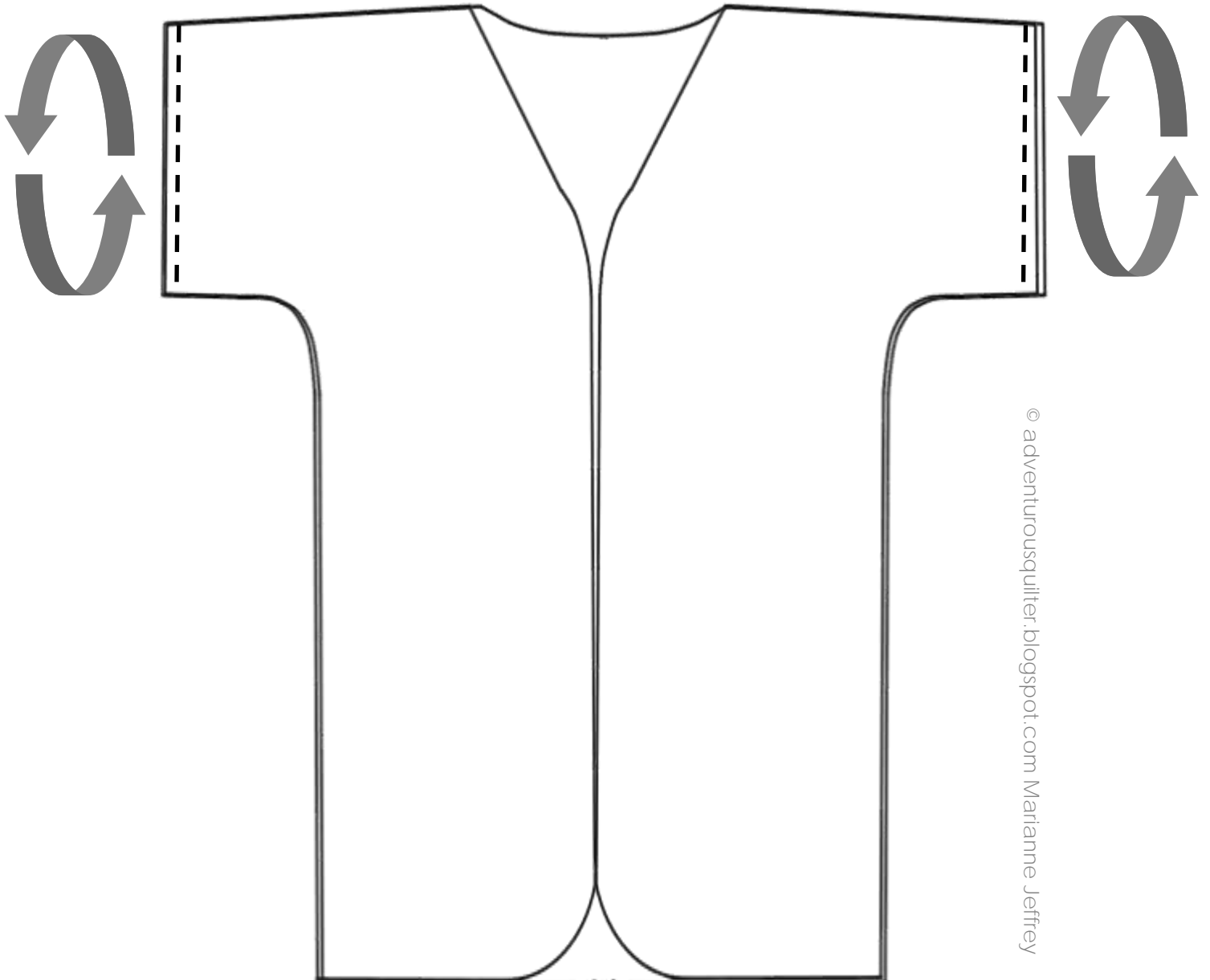
Turn the robe right side out thru that 5" gap.

Now sew a topstitching line around the neck line, front opening and hemline BUT be sure to close the 5" gap at the rear hemline neatly as you do this step.



Step 4

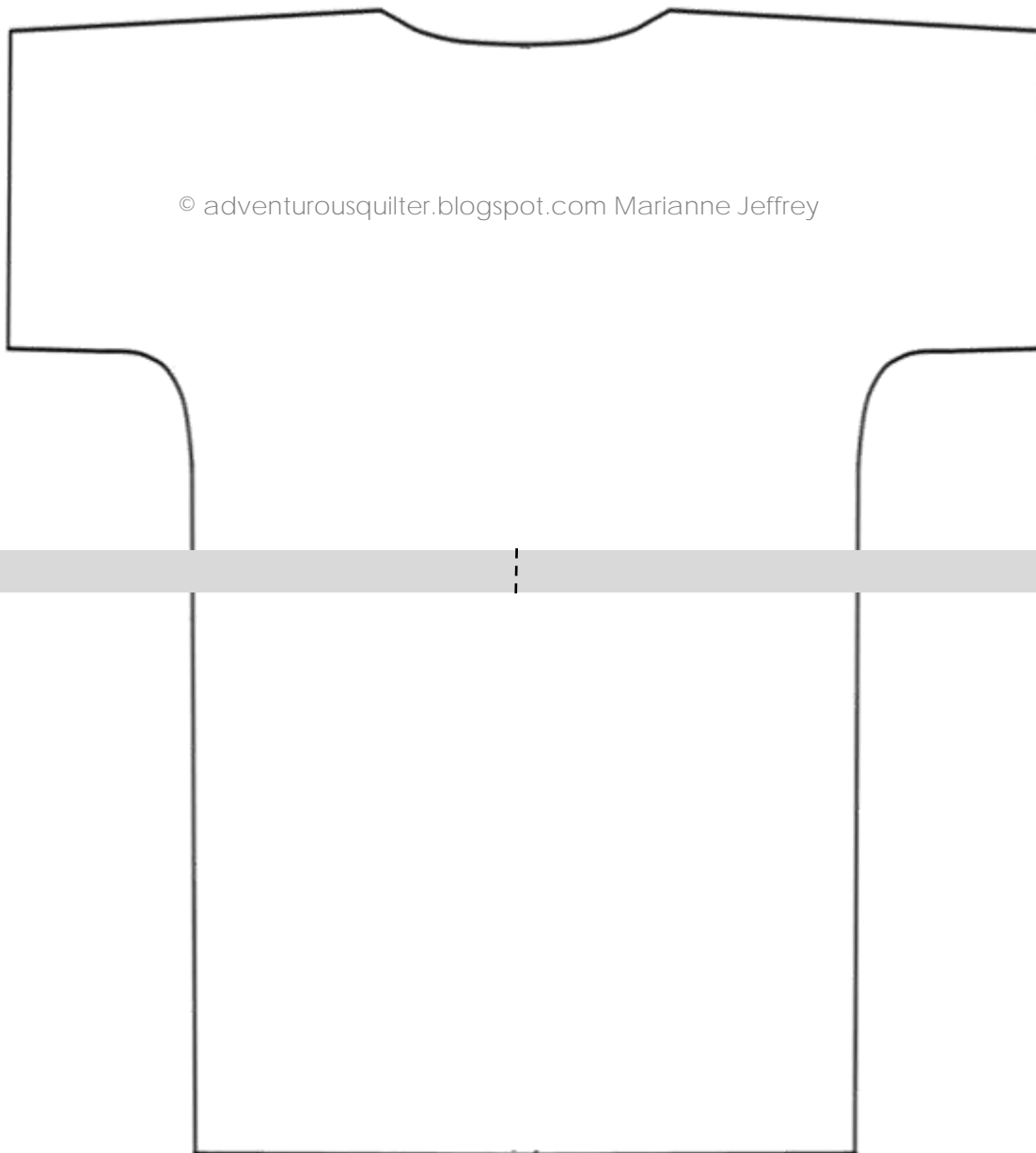
Turn 1/4" of the sleeve outer fabric under for a sleeve hem, do the same for the lining fabric. Pin the two layers of hem together so that the raw edges are fully enclosed. Stitch a line all the way around the sleeve close to the edge ensuring that you catch the lining and outer layers close to the 1/4" fold line, this finishes the hem of the robe sleeve and joins the lining to the outer at the same time.



Belt Attachment

Attach the belt to the center back of the robe 15" below the neckline sewing through the outer and lining.

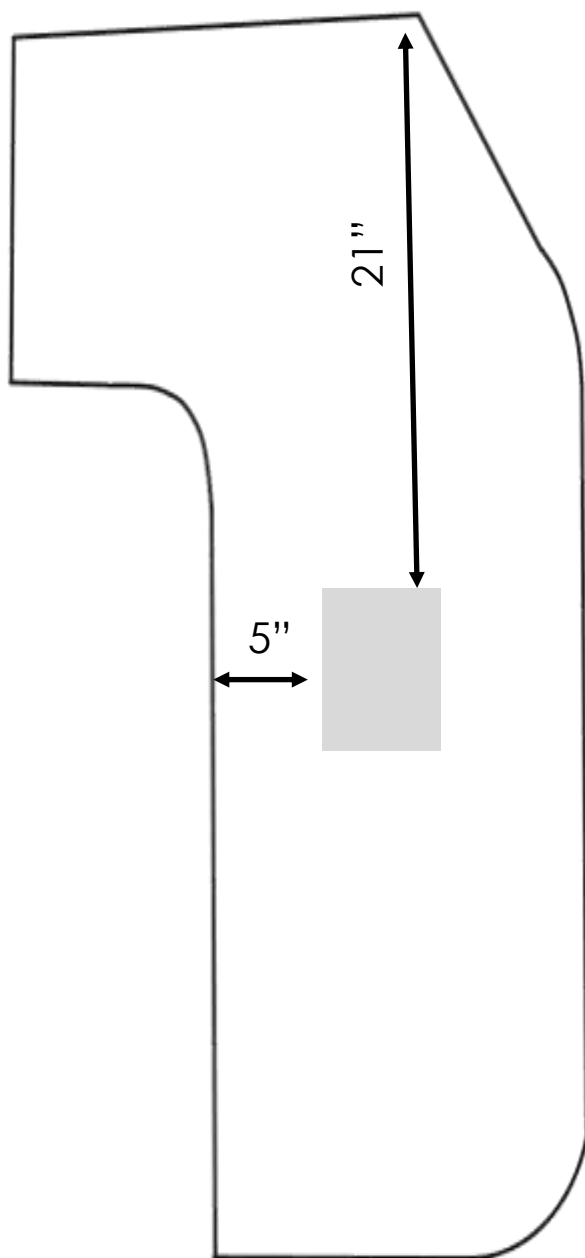
This ensures the lining is attached permanently to the back of the robe and the belt won't get lost.



You could add pockets!

You can add simple pockets to the outer of the robe! In this example the pocket is 5" x 7" and is mounted as shown in the diagram below.

NOTE: adding pockets should be done as step one prior to robe construction.



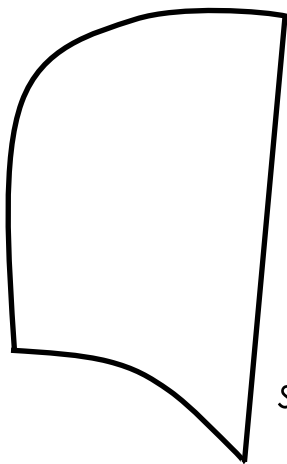


Spring/Fall Examples

© adventurousquilter.blogspot.com Marianne Jeffrey



Winter Quilted Robe Example



I added a hood to my quilted robe!
I haven't added the pattern drafting info for that to this tutorial but the diagram to the left shows the basic design shape I used. It is quilted and lined too! Just add a hood to both the lining and the shell before joining them.