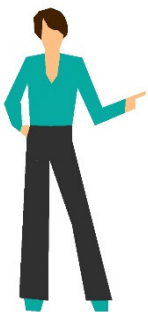


December 23

This border again changes the quilt center shape and makes it hard to even remember the quilt center as a basic square. That visual illusion makes the quilt design seem much more complicated than you would initially imagine possible with the basic quilt blocks provided.



Blocks used: December 3, 5, 5b, 12, blank squares of background fabric A

©adventurousquilter.blogspot.com Marianne Jeffrey