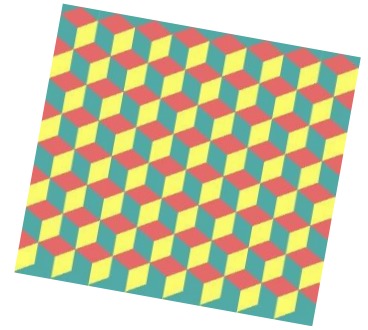
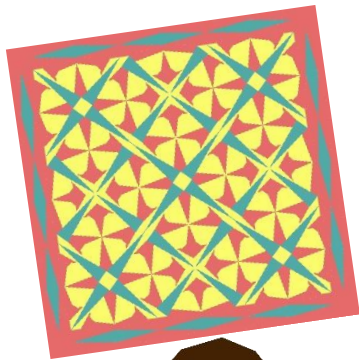


Color Study Tutorial Series Introduction

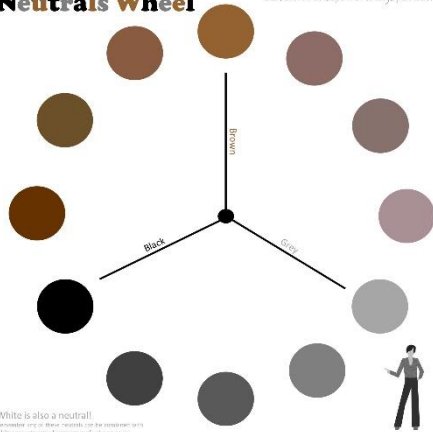
By Adventurous Quilter

Marianne Jeffrey

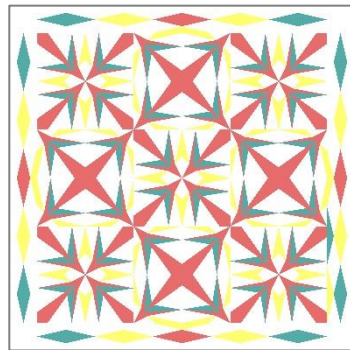
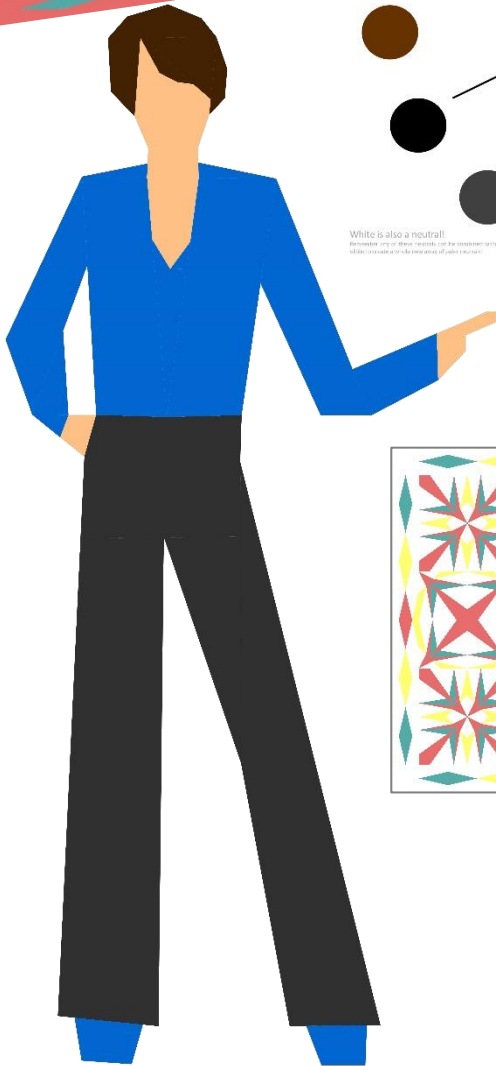


Neutrals Wheel

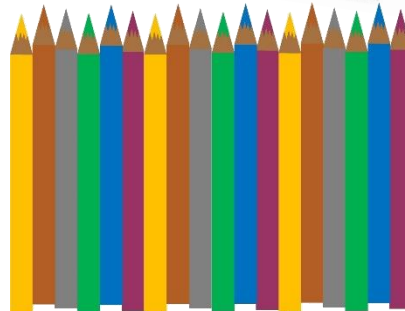
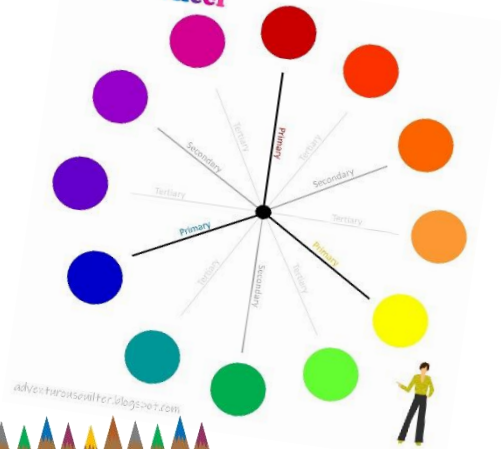
adventurousquilter.blogspot.com



White is also a neutral!
Remember any of these neutrals can be combined with
all the colors and still be neutral!



Color Wheel



After my recent popular post about color theory and the irrelevance of the color wheel relating to fabric selection. I decided that I would follow up by doing a Saturday series of blog posts relating to color study!

Why?

Because there is no way for quilters to shortcut the process of learning about color. The color wheel isn't some magic tool that will gift you with years of knowledge of color and its use in quilt making, that comes with lived experience, so if you are eager to improve your color and fabric selections to make magnificent quilts take some time each week to actually study color in the world around you!

So, for the foreseeable future Saturday posts on the blog will focus on color study! This printable PDF contains resources to help you explore color and increase your confidence and knowledge.

Here is my first color study example:

I took this photo last week whilst hiking. It is an Australian "Wattle" flower, wattle is an acacia variety.



The wilderness is vast array of colors and its 'wildness' is akin to the relationship between colors! Colors are like wild animals running amok in the jungle! You can try to tame them, you can let them run wild or you can simply explore how best to use them to suit your individual aesthetic preferences!

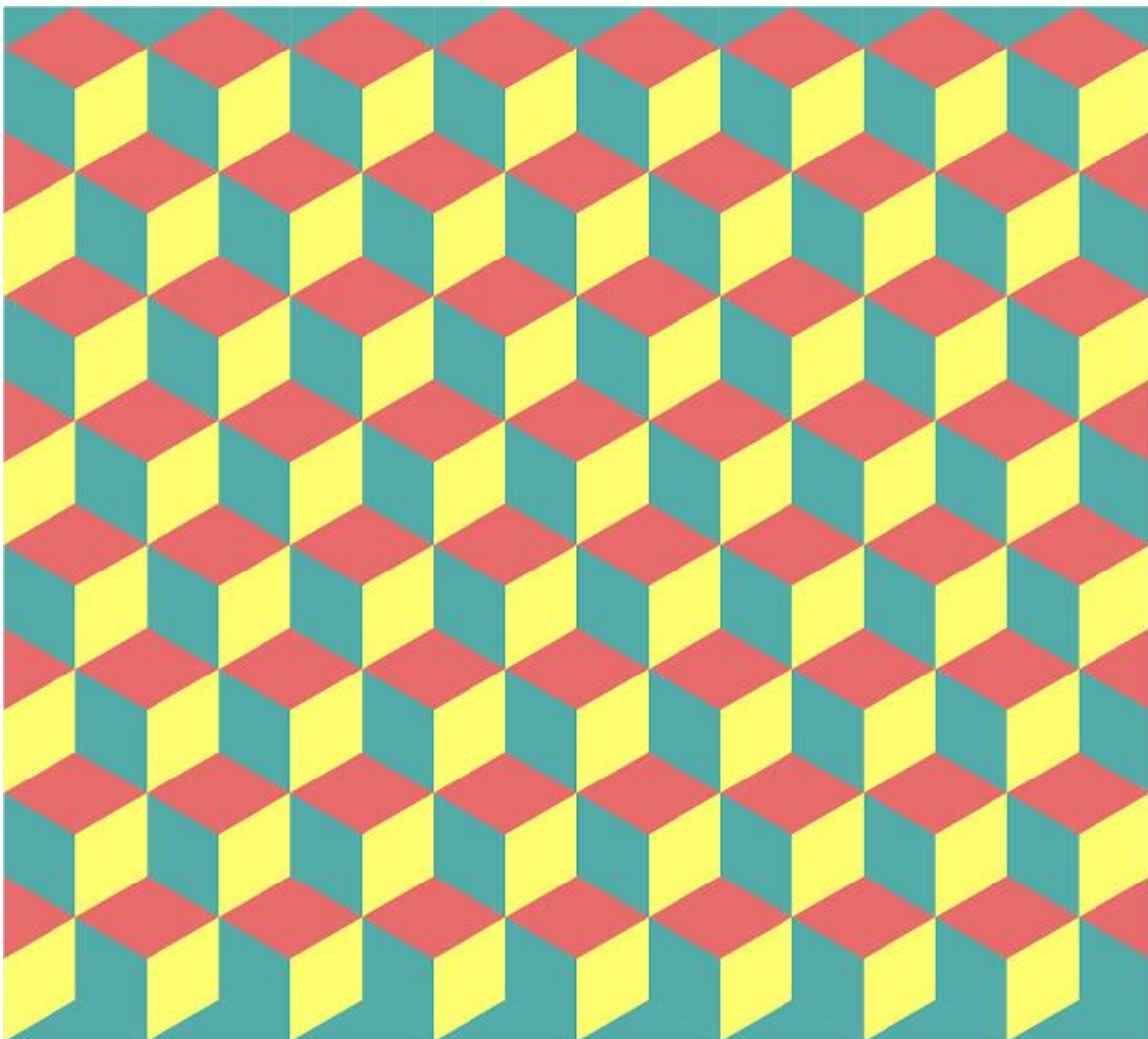
If you are one shade off with a color selection it can make a difference between having a great quilt and a spectacular quilt! Why? Because contrast is another vital element in fabric selections. Your color selections can be high contrast or low contrast such as in low volume quilts.

In this color study we see the fabulous yellow of the blossom teamed with a grey\green foliage and the red\brown soil of the forest. This palette is common here in the flora of forests in Western Australia.



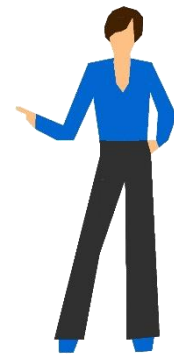
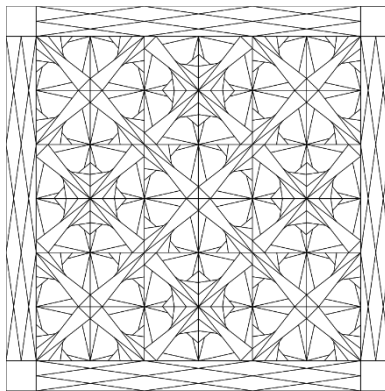
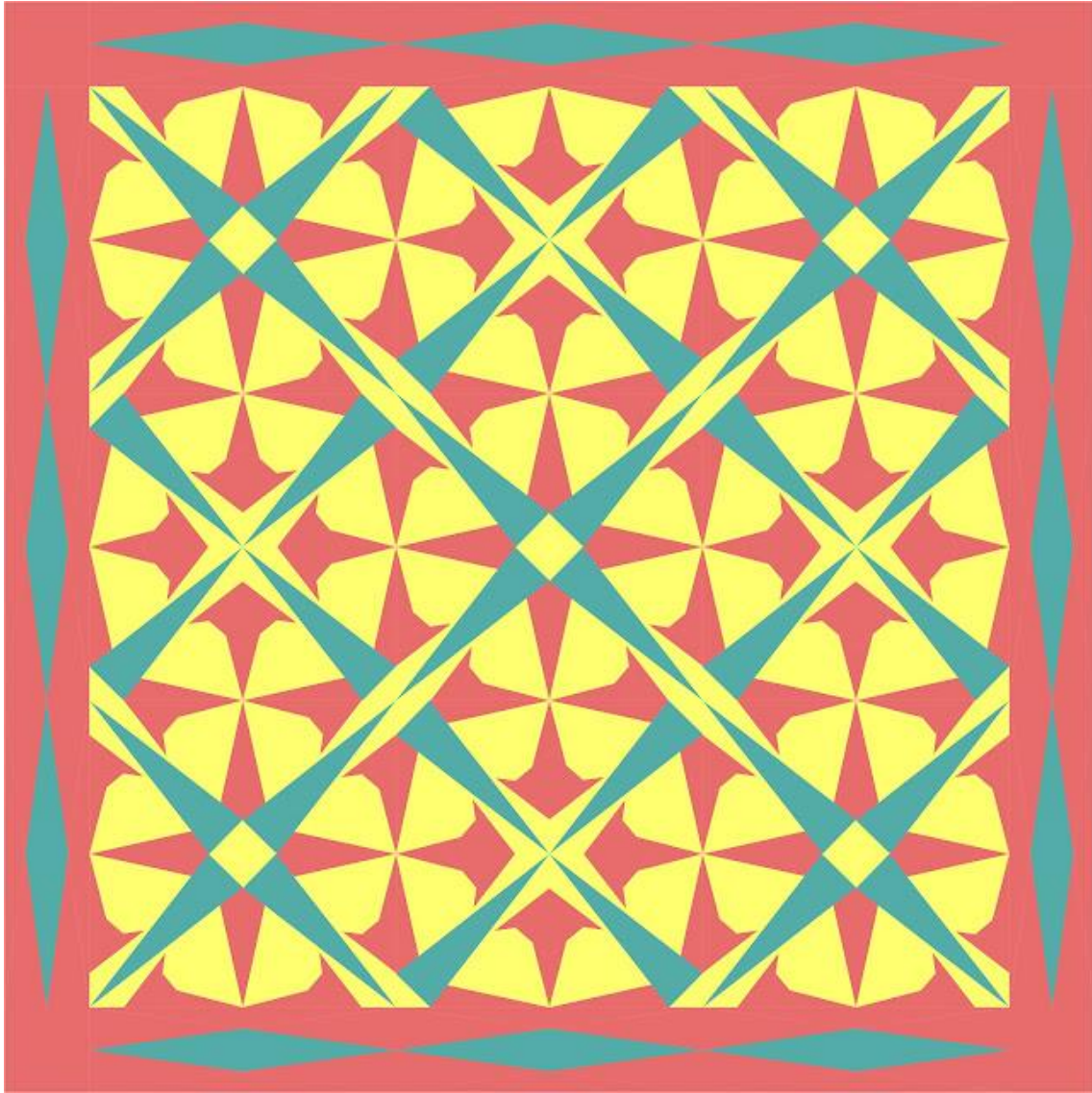
Example 1

Here is fun quilt mock-up that illustrates just these three colors in a quilt with a balanced palette where no one color is vastly dominant:



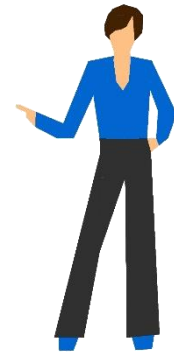
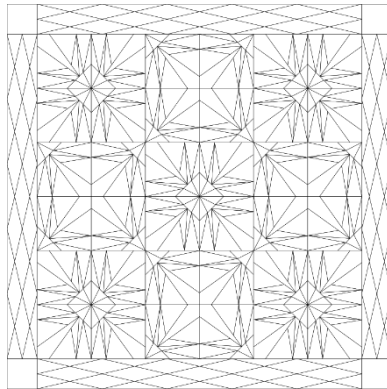
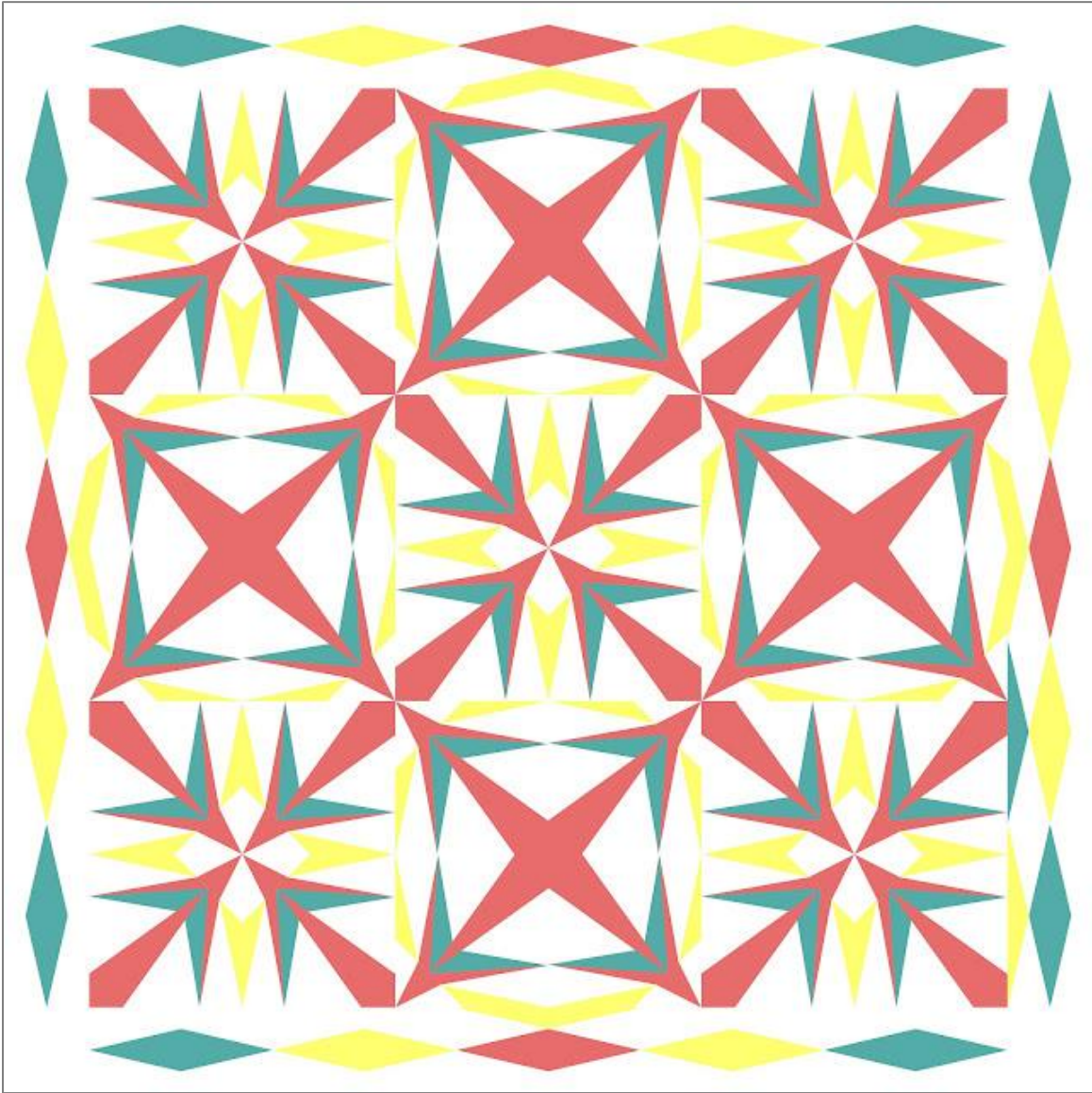
Example 2

Then in comparison a mock-up that shows the red/brown dirt color as the background and the yellow and green as feature fabrics:



Example 3

And remember you can always throw in a neutral background fabric to diffuse all that color if you prefer!



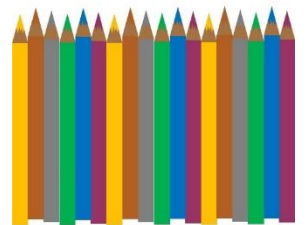
Weekly Color Study Task

1. Take a photo of something beautiful you see this week that catches your eye
2. Analyse the colors that are dominant in the photo (stick to 2 to 4 colors depending on the photo)
3. Imagine quilts and/or sewing projects featuring those colors (you can imagine fabrics in solid or print)

Resources Provided on pages 8,11,12 & 13

Color palette worksheet – if you would like to keep track of your color study work, I suggest keeping a printable worksheet each week in a scrapbook, or use the digital worksheet file provided on the website to do the same thing in a MS Word document!

I have provided the 3 example quilt outline drawings so that if you would like to you can color them in to explore a color palette you love!



Your inspiration images can be varied so the colors will be too!

Color Palette Worksheet

Color 1

Color 2

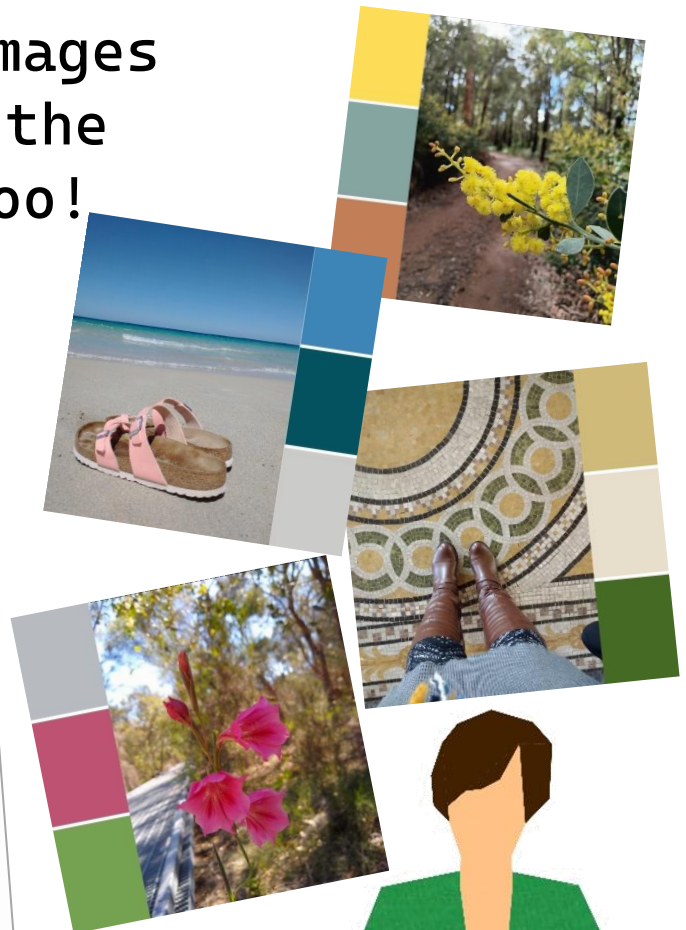
Color 3

Optional Color 4

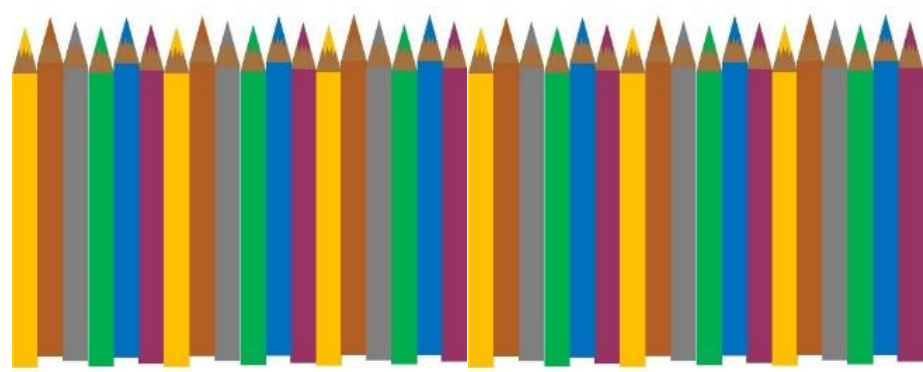
Photo and/or description of inspiration:

Analyse the color from your inspiration item/image
Show 3 to 4 dominant colors
Find fabrics to match
Color in the quilt block to show the palette in a star quilt block

Attach fabric selvedge scraps or other relevant colored objects



You will need some coloring pencils to effectively use this printable version.



Color Palette Worksheet

Color 1

Color 2

Color 3

Optional Color 4

Photo and/or description of inspiration:



Analyse the color from your inspiration item/image

Show 3 to 4 dominant colors

Find fabrics or items to match the colors

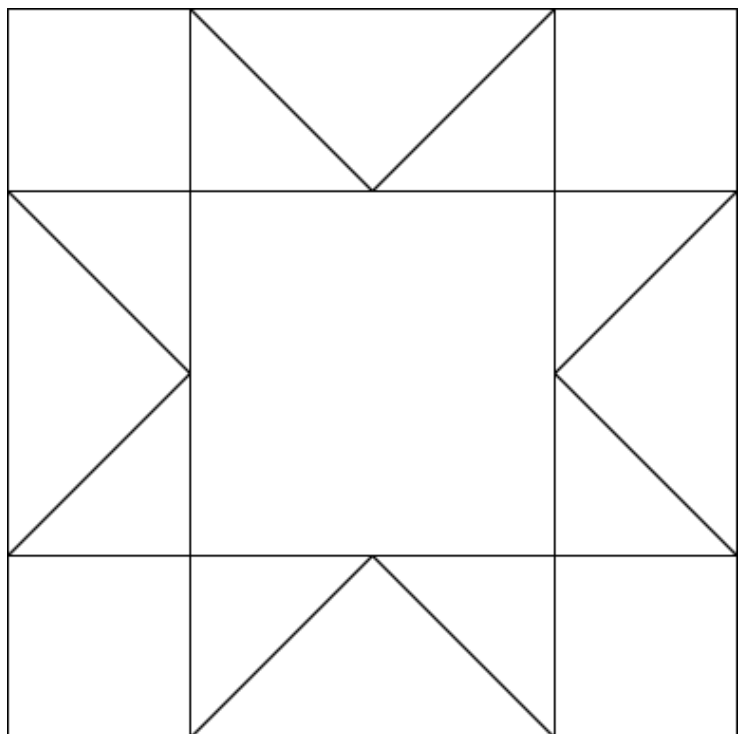
Color in the quilt block to show the palette in a star quilt block



Four dashed rectangular boxes for fabric scraps or objects.

Attach fabric selvedge scraps or other relevant colored objects

Four dashed rectangular boxes for fabric scraps or objects.



Color Palette Worksheet **DIGITAL EXAMPLE**

Color 1

Color 2

Color 3

Optional Color 4



Wattle flower
overhanging a red
dirt road through
the eucalypt
forest

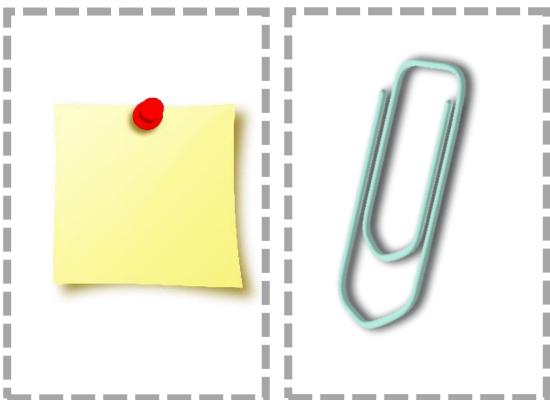


Analyse the color from your inspiration item/image

Show 3 to 4 dominant colors

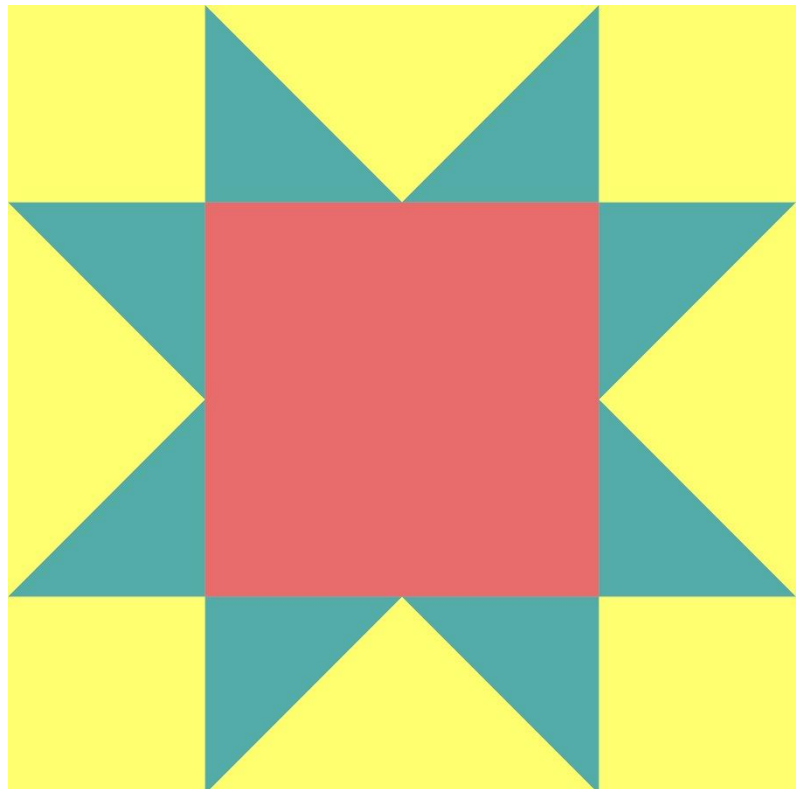
Find fabrics or items to match to colors

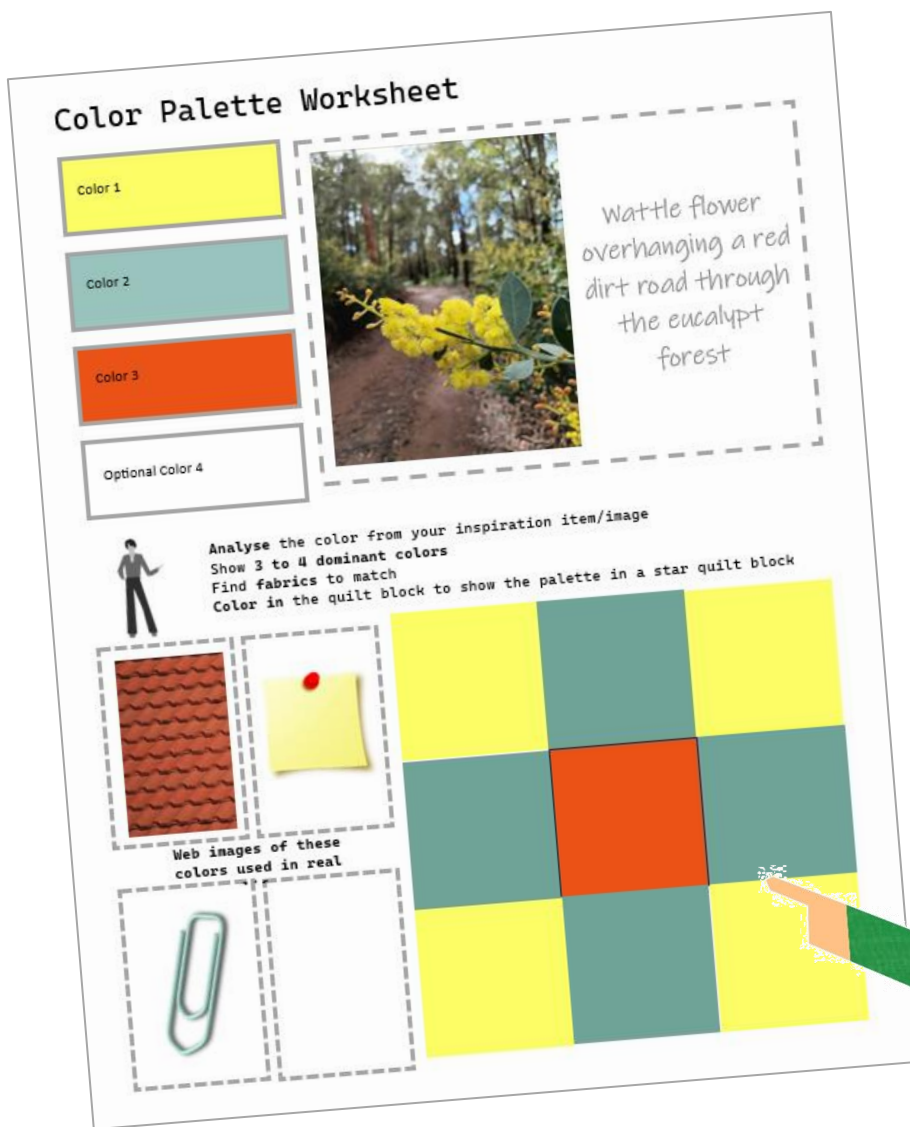
Color in the quilt block to show the palette in a star quilt block



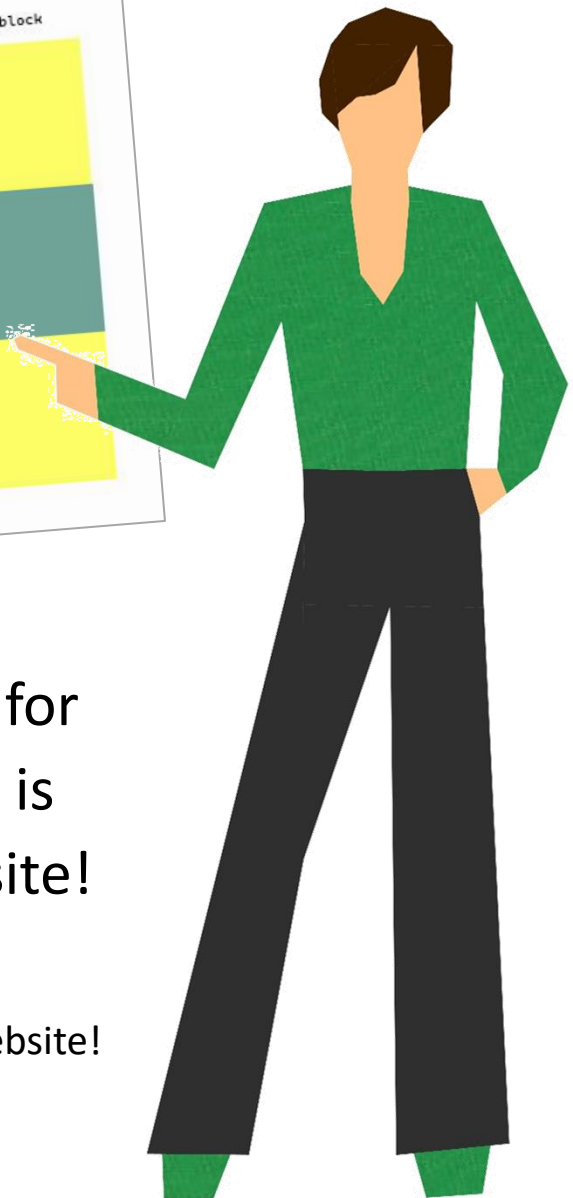
Web images of these
colors used in real

Two empty dashed boxes for pasting web images.





Tech savvy quilters you can keep a digital scrapbook of this color exploration journey by filling in the worksheet digitally!

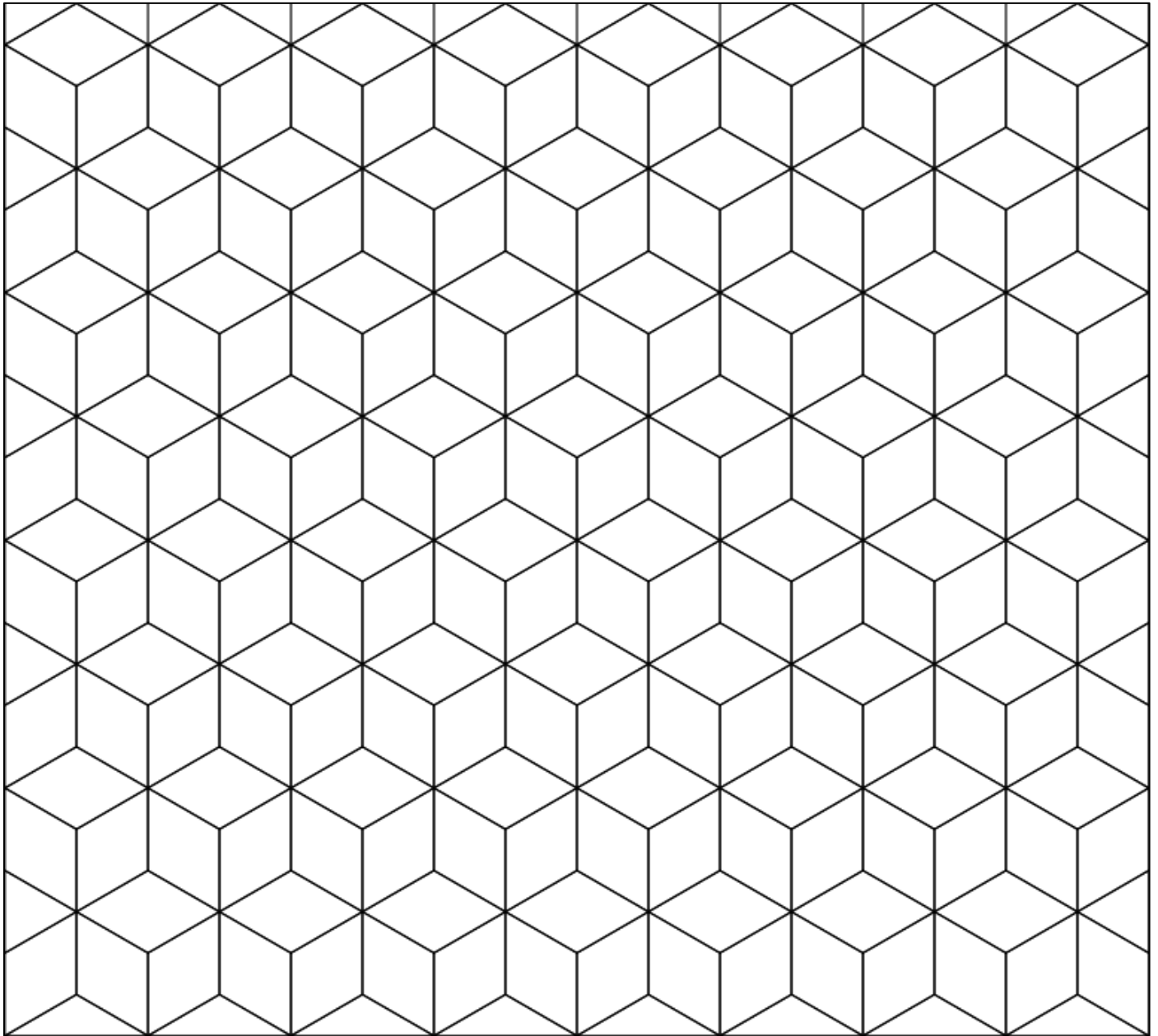


An MS Word tutorial for this is in PDF format is available on the website!

Download the MS Word file on my website!

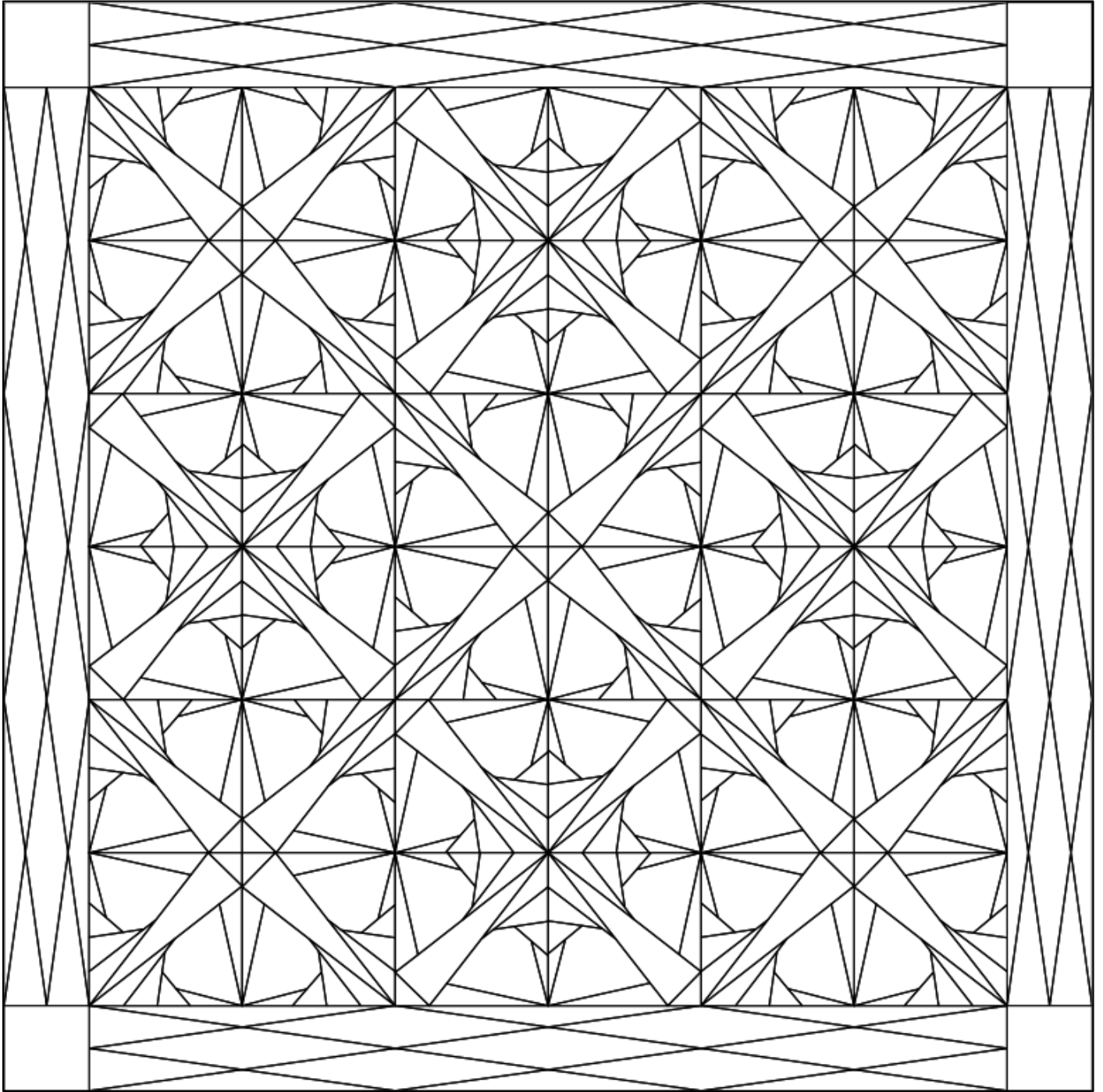


Explore a color palette of just 3 colors!





Explore a color palette of 2 to 4 colors!





Explore a color palette of 2 to 4 colors!

